

Ford Escape 2002 2004 2005 2006 2007 Workshop Service Repair Manual



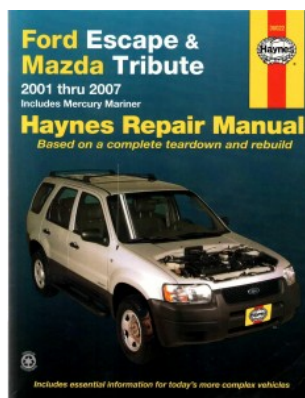
Model : Ford Escape 2002 2004 2005 2006 2007 Workshop Service Repair Manual

File type : PDF

- This automotive service repair software contains all the necessary instructions needed for any repair your vehicle may require from bumper to bumper. - This is the same manual that technicians and mechanics use to diagnose and repair your vehicle. It is the best and most complete information available for your vehicle. - Accurate, clear and concise text, combined with detailed illustrations, make it possible for anyone with even a bit of basic mechanical knowledge to safely and easily service and repair their vehicle. - Comprehensive diagrams, in depth illustrations, and all the manufacturers specifications and technical information you will need is included.

Ford's compact, five-passenger crossover SUV gets a new appearance package with silver silver metallic fascias, bodyside cladding and wheel lip moldings. A keypad entry system is standard on XLT and XLT Sport and Limited Sport Appearance Package receives a monochrome.

There are three new color options for 2007, too. Base and XLS versions are powered by a 2.3-liter four-cylinder that produces 153 horsepower, optional on XLT and included with the XLT Sport and Limited is a version of 200 hp 3.0-liter V-6.



Ford Escape 2002 2004 2005 2006 2007 Workshop Service Repair Manual